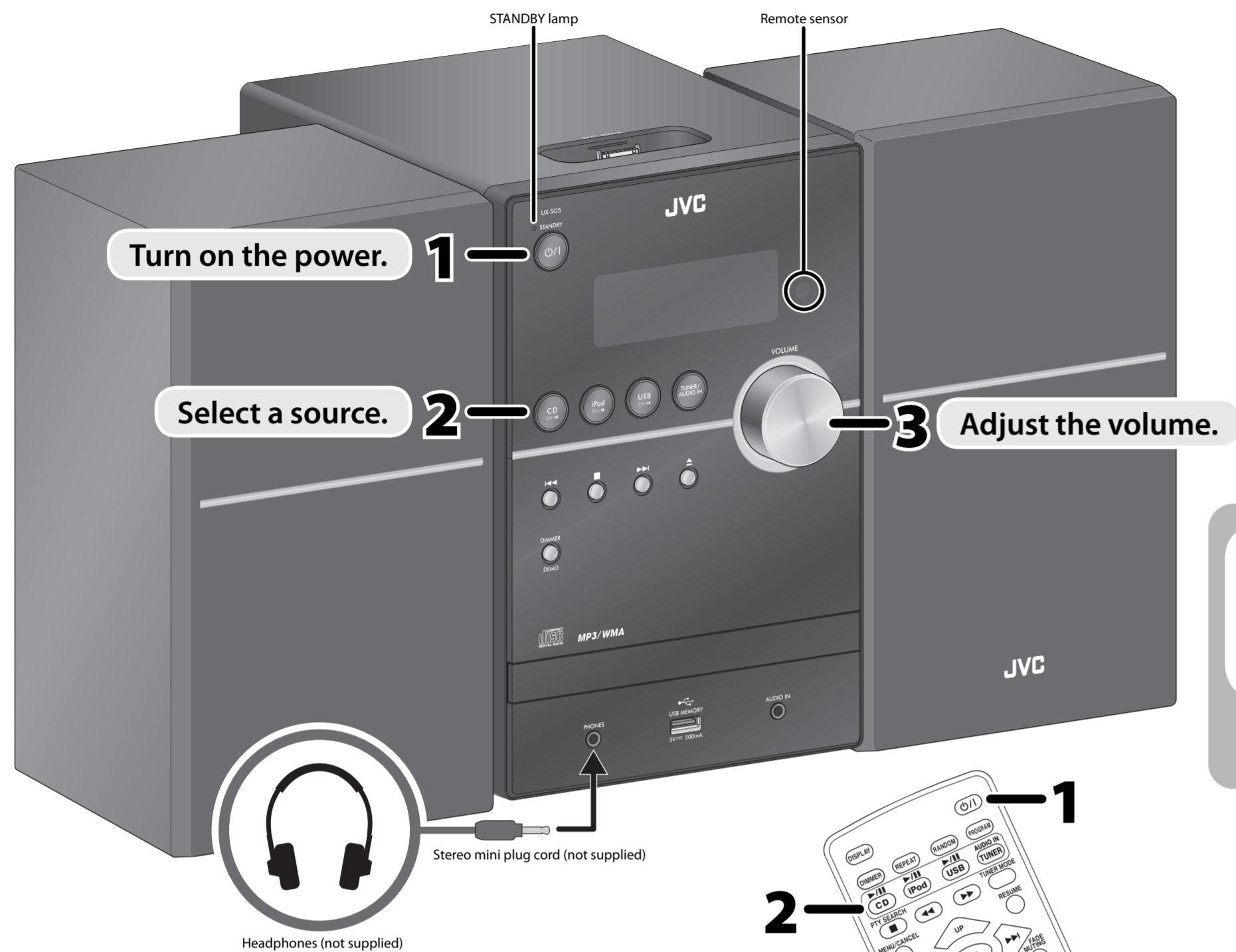


Basic operation



Turn on the power. **1**

Select a source. **2**

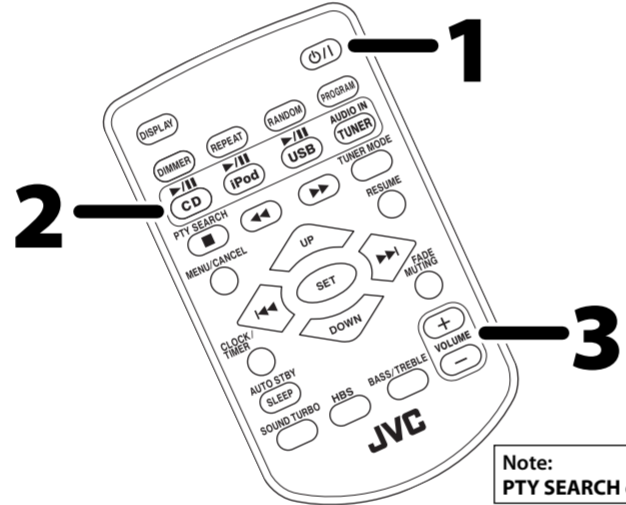
Adjust the volume. **3**

Stereo mini plug cord (not supplied)

Headphones (not supplied)

The **HP** indicator lights up when headphones are connected to the System.
• Be sure to turn down the volume before connecting or putting on the headphones.

DO NOT turn off the System with the volume set to an extremely high level; otherwise, the sudden blast of sound may damage your hearing, speakers, and headphones when you turn on the System or start playback.



Note: **PTY SEARCH** does not function.



FM radio

Searching for stations

1 **AUDIO IN** (TUNER) TUNER FM TUNER FM ↔ AUDIO IN

2 (Hold) (Hold)

The station search stops when a station of sufficient signal strength is found.
• To manually stop the search, press **▶▶** or **◀◀**.

• When you press **▶▶** or **◀◀** repeatedly, the frequency changes step by step.
• When an FM program is broadcast in stereo, the **S** (stereo) indicator lights up.

Improving the reception

To improve the reception

TUNER MODE MONO ↔ STEREO

• When the monaural mode is activated, the stereo effect is lost.

Presetting stations

You can preset up to 30 FM stations.

While listening to a target station...

1 **SET** 01-87.50

2 Select a preset number. UP DOWN

3 **SET**

To erase a preset station

1 Tune in to a preset station (see below).

2 **MENU/CANCEL** 01-87.50

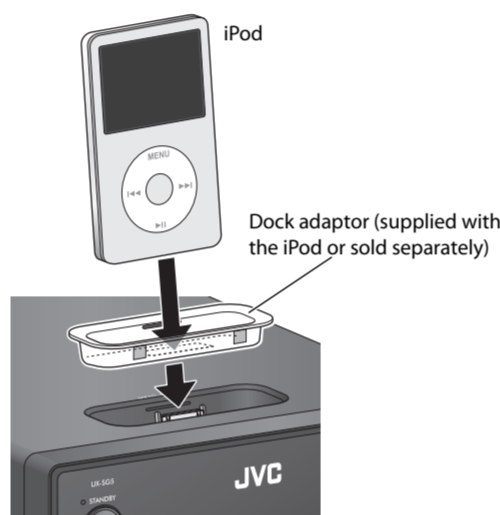
3 **SET**

Tuning in to a preset station

UP DOWN



iPod



Notes on iPod connection

- When detaching the dock adaptor from the dock, pull up the dock adaptor with your fingernail or sharp pointed tool using the slot.
- Be careful not to injure your fingertips or damage the terminal of the direct dock.
- DO NOT connect or disconnect the iPod when the System is turned on.
- Be sure to reduce the volume on the System to the minimum level before connecting iPod. Adjust the volume after starting playback.
- You cannot send any data to the iPod from the System.
- Do not carry the System with iPod connected. It might cause damage to the dock or you might drop the iPod.
- Do not touch or hit the iPod terminal pins or connector pins in the dock for iPod directly. Doing so might cause damage to the connector pins.
- iPod is charged through the dock when the System is turned on.

Before viewing a video/picture from your iPod on your monitor:
Make the appropriate video setting on iPod. For details of the setting, see the instruction manual for iPod.

Playback operations

▶▶/|| (iPod) IPOD

* Information shown on the display differs depending on the type of the iPod.

To play back/pause iPod Press **▶▶/||**.

To select a track Press **▶▶** or **◀◀**.

To fast-forward a track Press and hold **▶▶**.

To fast-reverse a track: Press and hold **◀◀**.

To play back at random Press **RANDOM** repeatedly.

To play back repeatedly Press **REPEAT** repeatedly.

To put iPod in sleep mode Press and hold **▶▶/||**.

Menu operations

To display the menu/to go back to the previous menu **MENU/CANCEL**

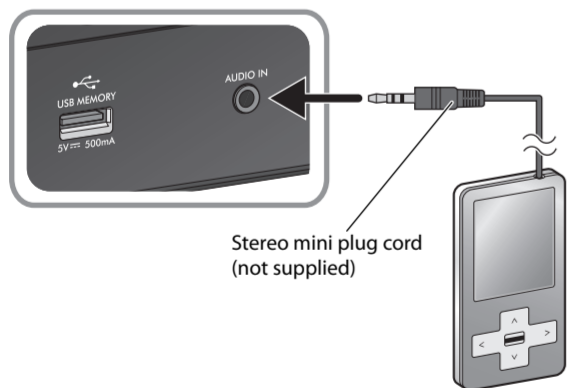
To select an item on the menu UP DOWN **SET**

Notes:

- Operate iPod touch itself in the following cases:
 - When operating the home button.
 - When selecting application icons on the home screen.
 - When dragging the slider.
- Sound distortion may occur when playing back audio sources with high recording levels. If distortion occurs, it is recommended to turn off the equalizer of iPod. For information on operating the iPod, see the instruction manual for iPod.



External device



Stereo mini plug cord (not supplied)

Playback operation

1 **AUDIO IN** (TUNER) AUDIO IN TUNER FM ↔ AUDIO IN

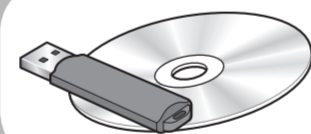
2 Start playback of the external device.

Adjusting the audio input level

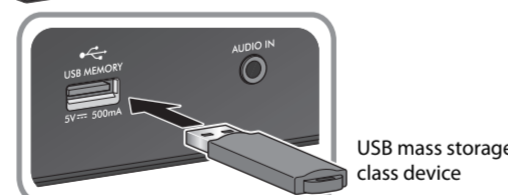
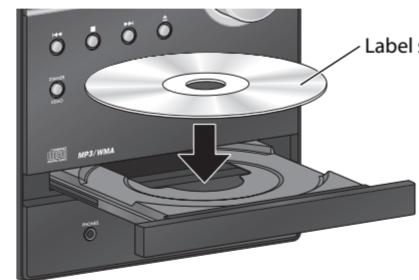
You can change the audio input level through the AUDIO IN jack.

SET HIGH HIGH ↔ NORMAL

• This function affects only the sound coming out through the speakers.



Disc/USB



Notes on USB mass storage class device connection

- Connect a USB mass storage class device when the System is turned off to prevent malfunction.
- Do not use a USB hub.
- When connecting with a USB cable, use a USB 2.0 cable whose length is less than 1 m.
- The USB mass storage class device is charged through the USB MEMORY terminal when "USB" is selected as the source.
- You cannot connect a computer to the USB MEMORY terminal of the System.
- Electrostatic shock at connecting a USB mass storage class device may cause abnormal playback of the device. In this case, disconnect the USB mass storage class device then reset the System and the USB mass storage class device.
- While playing back a file on a USB mass storage class device, do not disconnect the device. Doing so may cause malfunction on both the System and the device.

Playback operations

▶▶/|| (CD) CD

▶▶/|| (USB) USB

To open the disc tray Press **▲** on the main unit.

To play back/pause a disc Press **▶▶/||**.

To play back/pause a USB mass storage class device Press **▶▶/||**.

To select a track Press **▶▶** or **◀◀**.

To fast-forward a track Press and hold **▶▶**.

To fast-reverse a track Press and hold **◀◀**.

To select a group Press **UP** or **DOWN**.

To stop playback Press **■**.

Repeat Play

REPEAT REP ALL	Repeats all tracks.
REP TRK 1	Repeats the current track.
REP GRP	Repeats all tracks in the current group (MP3/WMA only).
REP ALL ALL	Repeats all tracks.
REP OFF Off	Cancels.

Random Play

1 **RANDOM** RND GRP RND RND GRP

RND GRP RND	Plays tracks in the current group in a random order (MP3/WMA only).
RND ALL RND ALL	Plays all tracks in a random order.
RND OFF Off	Cancels.

2 **▶▶/||** (CD) or **▶▶/||** (USB)

Program Play

While playback is stopped...

1 **(PROGRAM)** P-01

2 Select a track number (up to 32 tracks). **▶▶/||** **SET**

- To cancel, press **CANCEL**.

3 **▶▶/||** (CD) or **▶▶/||** (USB)

- To check the programmed contents, press **◀◀** or **▶▶**.
- To erase the entire program, press and hold **CANCEL**. The **PRGM** indicator is turned off.
- To exit from Program Play, press **■**. The **PRGM** indicator is turned off.
- The stored program is kept.

Resume Play

This System stores the beginning of the stopped track.

RESUME RESUME RESUME

When you start playback again, it starts from the beginning of the stored track.

- To clear the stored position, perform one of the following operations:
 - Press **■** twice.
 - Open the disc tray.
 - Disconnect the USB mass storage class device.
- This function cannot be used for Program Play.

Prohibiting disc ejection

You can lock the disc tray.

While the System is on standby...

(On the main unit)

LOCKED LOCKED ↔ UNLOCKED

(While holding...)